

Middlemoor Wind Farm Community Benefit Fund

RWE

December 2022

RWE, one of the world's leading renewable energy companies, developed and operates the Middlemoor onshore wind farm.

Operational since September 2013, the 18 turbine wind farm located in Eglington, Northumberland, supplies provides over £100,000 per year for the Middlemoor Wind Farm Community Benefit Fund.

Individuals can apply for grants between **£250 to £2,500**. Groups can apply for grants between **£250** and the maximum amount available each year .

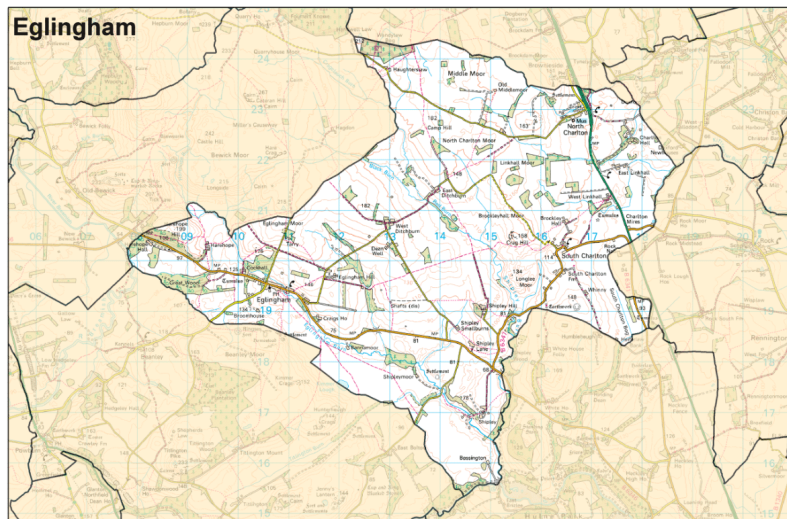
There are three funding rounds each year for applications over £2,500. In 2023, these are **18 January, 12 July and 27 September**.

A local voluntary Panel has been established to decide on the allocation of Funds. **There are currently three vacancies on the Panel** and we would welcome applications from within the Parish, particularly from women and young people (18-30). If you would like to get involved please do contact GrantScape in the first instance.

Project Location

Priority will be given to applications that benefit individuals and communities within Eglington. Parish

Applications from organisations located outside Eglington will be considered as long as they are deemed to benefit the residents of the Parish.



Grants for Individuals

Grants of up to £2,500 are available for individuals to support a range of activities which include:

- encouraging and nurturing talent within the arts or amateur sport
- supporting individuals to access education, training courses and personal development opportunities
- enabling access to apprenticeships or vocational courses

Grants for Organisations

Grants are available for community groups, local charities, the Parish Council (for projects above its statutory duty), Social Enterprises and Community Interest Companies operating on a **non-profit-distributing basis** and Schools, for both capital and revenue projects, as follows:

- ◆ **Community buildings and facilities** - For example: capital improvement works to village halls
- ◆ **Energy conservation & renewable energy** - For example: Insulation and energy efficiency improvements
- ◆ **Community activities and services** - For example: projects addressing health and wellbeing
- ◆ **Environmental and public open space projects** - For example: projects involving parks or nature reserves
- ◆ **Sports, recreation and play** - For example: playgrounds, skate parks, sports equipment and sports field drainage

Please visit GrantScape's website to find out how to apply. You are also encouraged to contact GrantScape to discuss any proposals you may have, particularly if you are unsure if your project is eligible. We would much rather have the conversation to confirm eligibility before you take the time to complete the application form to then find out that your application cannot be progressed.

All applications between £250 and £2,500 will be fast tracked and decisions reached within 4 weeks of submitting your form. Applications for grants over £2,500 may take up to 12 weeks for a decision.

Find out more

Telephone: 01908 247630

Email: info@grantscape.org.uk

www.grantscape.org.uk

GrantScape 

The Experts in Community Fund Management