

Settlement Boundary Methodology and Background Report Eglingham Neighbourhood Plan – Addendum for Submission Plan (December 2023)

This is a brief addendum to the original settlement boundary methodology and background report that was produced to support the Regulation 14 version of the Eglingham Neighbourhood Plan.

During the Regulation 14 consultation on the ENP several suggestions for alterations to the settlement boundary were submitted to the Parish Council for consideration by landowners. These are outlined in full in the appendices to the Consultation Statement which is submitted with the ENP.

Two of the proposed settlement boundary alterations, two were considered by the Parish Council to be appropriate and consistent with both the vision and objectives of the Plan and with the settlement boundary methodology which was used to define the settlement boundary.

The attached map shows each of the sites clearly. These sites are now shown on the proposed Policies Map which is being submitted as part of the ENP.

The first site is an area which is in fact in the curtilage of adjacent buildings and comprises an old garage and parking area. Its inclusion in the settlement boundary makes sense and accords with the criteria set out in the original methodology. The boundary has therefore been altered to include this small piece of land.

The second site is an agricultural barn which for some reason was excluded from the original settlement boundary. The boundary had been drawn to include all the farm buildings, so the exclusion of this barn was, again, an oversight. The boundary has therefore been altered to include this small piece of land and building.

Other suggestions for alterations to the boundary have not been brought forward to the submission draft, as they would have materially altered the nature of the ENP and would not have been consistent with the expectations of the community or in accordance with the agreed settlement boundary methodology.

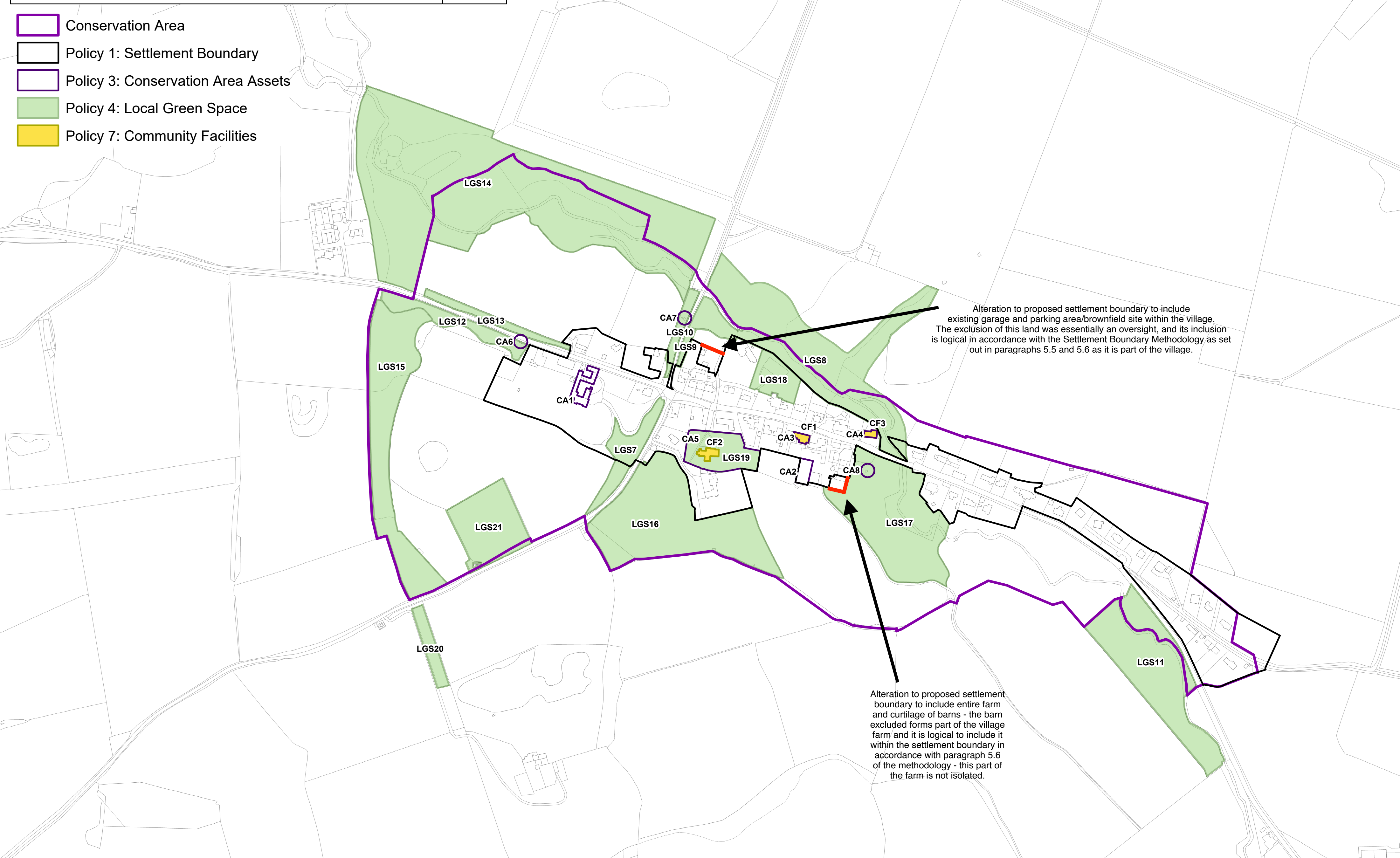
The sites that are included are shown on the map below:

**Eglingham Pre-Submission Neighbourhood Plan
Policies Map
Inset 1 - Eglingham Village
April 2023**

Scale @ A2: 1:3,500



- Conservation Area
- Policy 1: Settlement Boundary
- Policy 3: Conservation Area Assets
- Policy 4: Local Green Space
- Policy 7: Community Facilities



Alteration to proposed settlement boundary to include existing garage and parking area/brownfield site within the village. The exclusion of this land was essentially an oversight, and its inclusion is logical in accordance with the Settlement Boundary Methodology as set out in paragraphs 5.5 and 5.6 as it is part of the village.

Alteration to proposed settlement boundary to include entire farm and curtilage of barns - the barn excluded forms part of the village farm and it is logical to include it within the settlement boundary in accordance with paragraph 5.6 of the methodology - this part of the farm is not isolated.